

Test Report

Report No.:CDR0905095501101-A

Page 1 of 4

Applicant :CHENGDU KANGLONGXIN PLASTICS CO., LTD.

Address :E20D, XIANGFUYUAN BLDG., NO.1, SOUTH SECTION 3, 2ND RING ROAD,
CHENGDU, CHINA

Report on the submitted sample(s) said to be:

Sample Name :PC Film
Sample Description :Black plastic sheet
Part No. :KLX FRPC-1870B, KLX FRPC-1860B, KLX FRPC-1860-83B
Sample Received Date :May. 11, 2009
Testing Period :May. 11, 2009 to May. 13, 2009

Test Requested :As specified by client, to determine the Lead, Mercury, Cadmium,
Hexavalent Chromium, PBBs&PBDEs content in the submitted sample.

Test Method:

Tested Item(s)	Pretreatment Method	Measured Equipment(s)	Report Limit
Lead (Pb)	IEC 62321:2008 Ed.1 Sec.8	ICP-OES	2 mg/kg
Mercury (Hg)	IEC 62321:2008 Ed.1 Sec.7	ICP-OES	2 mg/kg
Cadmium (Cd)	IEC 62321:2008 Ed.1 Sec.8	ICP-OES	2 mg/kg
Hexavalent Chromium (Cr(VI))	IEC 62321:2008 Ed.1 Annex C	UV-Vis	2 mg/kg
Polybrominated Biphenyls (PBBs)	IEC 62321:2008 Ed.1 Annex A	GC-MS	5 mg/kg
Polybrominated Diphenyl Ethers (PBDEs)	IEC 62321:2008 Ed.1 Annex A	GC-MS	5 mg/kg

Test Result(s): Please refer to the following page(s).

Tested by

A red circular stamp with the text 'CENTRE TESTING INTERNATIONAL' around the perimeter and 'CTI' in the center. Overlaid on the stamp is a handwritten signature in black ink. Below the stamp, the text 'Technical Manager' is printed.

Approved by

Inspected by

A handwritten signature in black ink, appearing to be 'Jed', written over a horizontal line.

Date

May. 16, 2009

Test Report

Report No.:CDR0905095501101-A

Page 2 of 4

Test Result(s):

Tested Item(s)	Content
Lead (Pb)	N.D.
Mercury (Hg)	N.D.
Cadmium (Cd)	N.D.
Hexavalent Chromium (Cr(VI))	N.D.

Tested Item(s)	Content
Polybrominated Biphenyls(PBBs)	
Monobromobiphenyl	N.D.
Dibromobiphenyl	N.D.
Tribromobiphenyl	N.D.
Tetrabromobiphenyl	N.D.
Pentabromobiphenyl	N.D.
Hexabromobiphenyl	N.D.
Heptabromobiphenyl	N.D.
Octabromobiphenyl	N.D.
Nonabromobiphenyl	N.D.
Decabromobiphenyl	N.D.
Polybrominated Diphenyl Ethers(PBDEs)	
Monobromodiphenyl ether	N.D.
Dibromodiphenyl ether	N.D.
Tribromodiphenyl ether	N.D.
Tetrabromodiphenyl ether	N.D.
Pentabromodiphenyl ether	N.D.
Hexabromodiphenyl ether	N.D.
Heptabromodiphenyl ether	N.D.
Octabromodiphenyl ether	N.D.
Nonabromodiphenyl ether	N.D.
Decabromodiphenyl ether	N.D.

Note: -N.D. = Not Detected (<report limit)

-mg/kg = ppm = parts per million

Remark: This report is amended base on the test report No.CDR0905095501101.

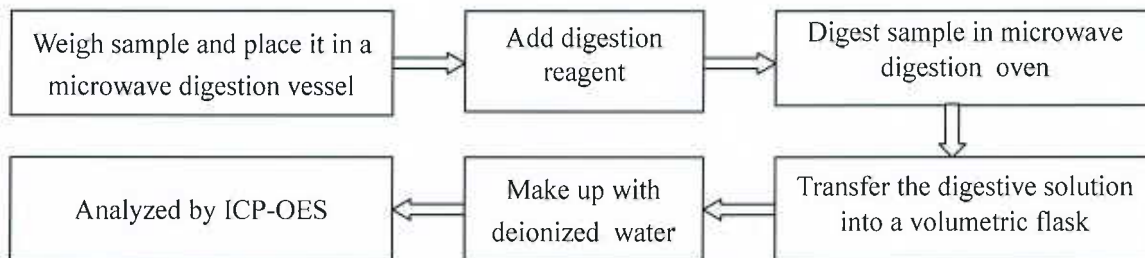
Test Report

Report No.:CDR0905095501101-A

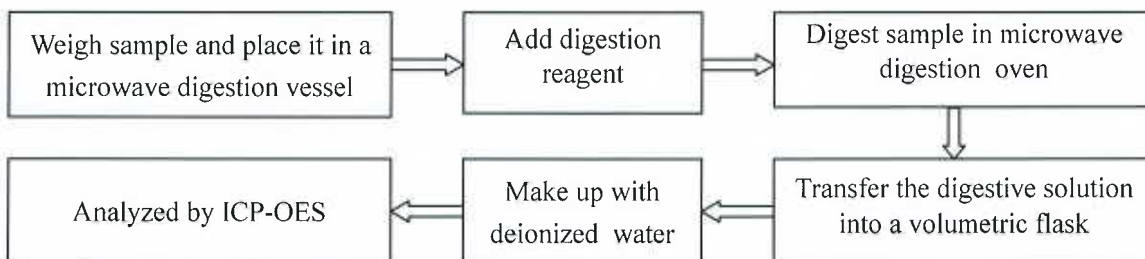
Page 3 of 4

Test Process:

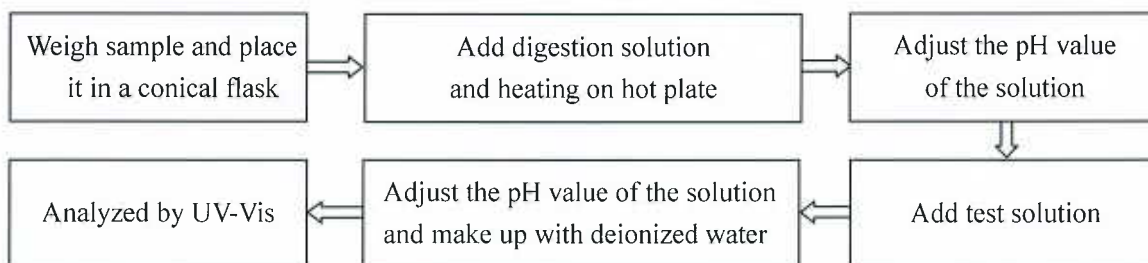
1. Test for Pb/Cd Content



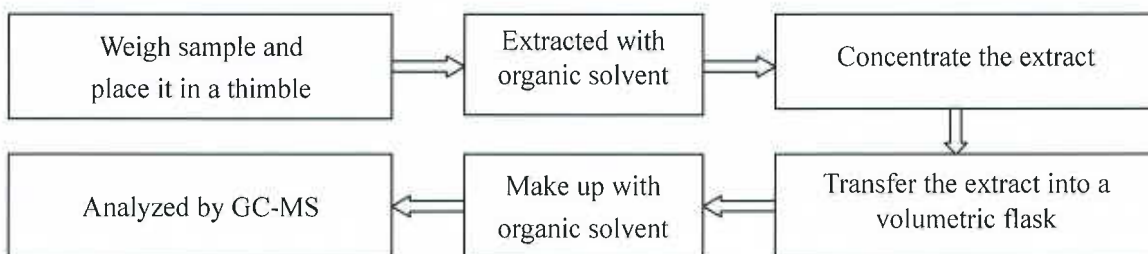
2. Test for Hg Content



3. Test for Chromium(VI) Content



4. Test for PBBs /PBDEs Content

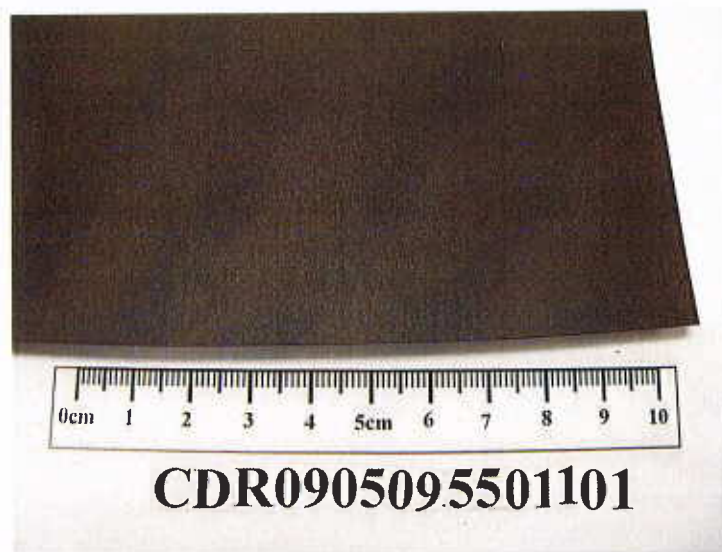


Test Report

Report No.:CDR0905095501101-A

Page 4 of 4

Photo of the sample



*** End of report ***

This report is considered invalidated without the Special Seal for Inspection of the CTI, This report shall not be altered, increased or deleted. The results shown in this test report refer only to the sample(s) tested. Without written approval of CTI, this test report shall not be copied except in full and published as advertisement.

Building C, Hongwei Industrial Zone, Baoan 70 District, Shenzhen